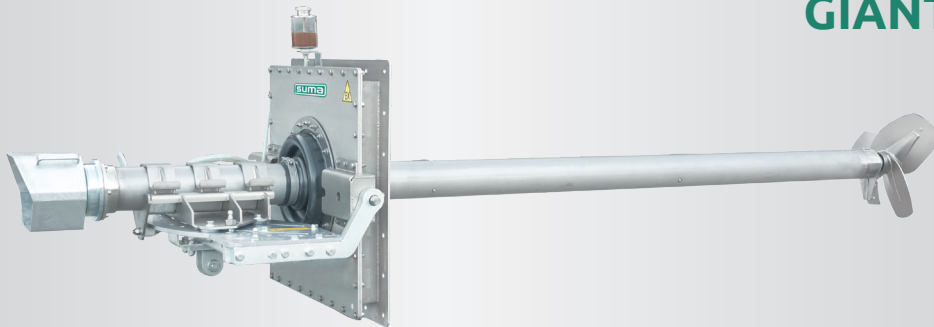


GIANTMIX FT HY



Application

Long-axis agitator
 Dry matter content up to 14 %
 Substrate temperature up to 70°C
 pH-values 6.5 - 8.2

Technical Data

Tube length 4.0 / 5.0 / 5.5 m
 Tube Ø 159 x 5 mm, ss304 inclusive robust tube within tube technology
 Sealing plate 120 x 120 cm (143 x 143), ss304
 ss316 on request
 Sealing membranes of EPDM60
 Installation up to 8 m below substrate level,
 other immersion depths on request
 Oil inspection glass for monitoring the tightness
 Agitator completely manufactured in modular design
 Power take-off with protection for tractor operation
 POM protection to minimize abrasion

Adjustment range

Lateral adjustment $\pm 30^\circ$ through handspindle
 Tilt adjustment up to $\pm 30^\circ$ through hydraulic cylinder
 Tank openings: 800 x 800 mm (plate 120 cm)
 1,000 x 1,000 mm (plate 143 cm)

Ex-Zone

Ex-zone 2 (outside the tank) up to the PTO of the agitator
 and Ex-zone 1 (inside the tank)
 Classification mechanical components:
CE II 2G Ex h IIA T1 Gb

Bearing (drive side)

Standard design with drive train HY for one rotation
 direction
 Power take off connection (PTO) 1-3/8" (6-chock)
 Bearing head as own modular unit

Bearings (propeller side)

2 tapered roller bearings to absorb the axial forces
 Mechanical seal SiC/SiC independent of rotation direction
 Interim bearings for the drive shaft (slide bearings)

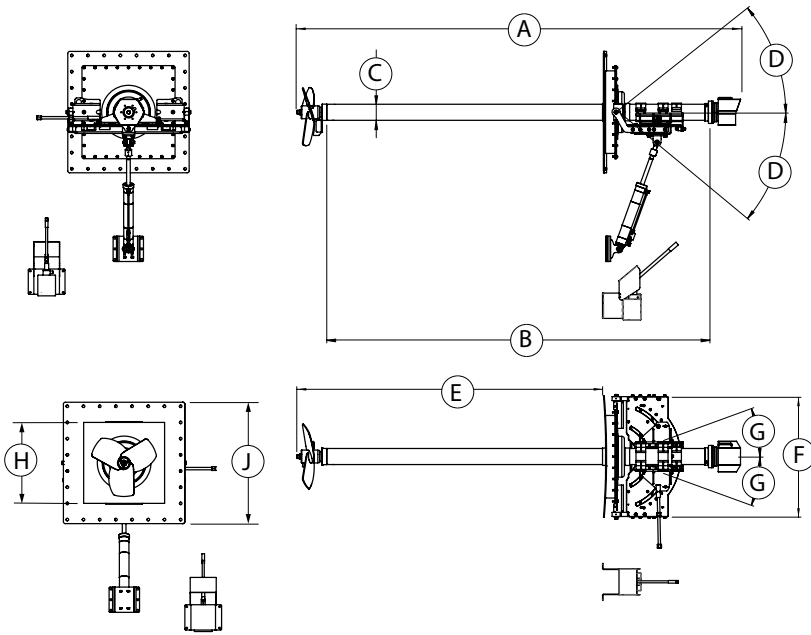
Propeller

3-blade high efficiency propeller, dynamically balanced

min. 100 HP (72 kW)	540 rpm	Propeller HD+ 660
	750 rpm	Propeller HD+ 580
min. 120 HP (88 kW)	540 rpm	Propeller HD+ 700
	750 rpm	Propeller HD+ 620
min. 136 HP (100 kW)	540 rpm	Propeller HD+ 750
	750 rpm	Propeller HD+ 660

ss304, optional ss316 or hardend steel

GIANTMIX FT HY



Dimensions

Type	A [m]	B [m]	C [mm]	D	E [m]	F [m]	G	H [m]	J [m]
FT HY	4.5 / 5.5 / 6.0	4.0 / 5.0 / 5.5	ø 159	max. ± 30°	3.0 / 4.0 / 4.5	1.23	± 30°	0.8 / 1.0	1.2 / 1.43

Technical Data

Type	Required tractor power [HP]	Propeller speed [rpm]	Propeller diameter [mm]	Axial force [kN] *	Flow velocity [m/s] *	Pumping rate water [m ³ /min]	Weight [kg]				
FT HY	100	540	660	6.0	5.0	99	750				
FT HY	100	750	580	7.2	6.3	95	750				
FT HY	120	540	700	7.1	5.3	118	750				
FT HY	120	750	620	8.4	6.4	111	750				
FT HY	136	540	750	9.0	5.4	139	750				
FT HY	136	750	660	10.6	6.5	128	750				

Subject to technical changes

* Calculated via CFD simulation and validated in test basin with water

As per: 2020-09