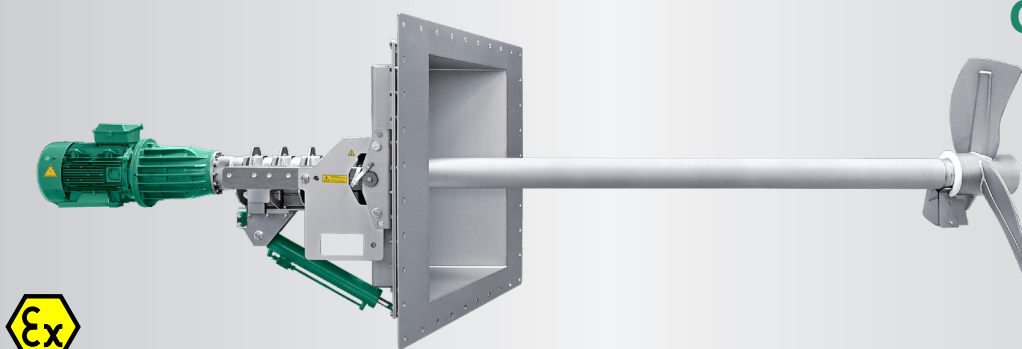


## GIANTMIX FTX

### FTX 150-135




#### Application

Dry matter content up to 15 %  
Substrate temperature up to 70°C  
pH-value 6.5 - 8.5

#### Technical data

Tube length 4.0 / 5.0 / 5.5 / 6.0 m  
Tube Ø 159 x 5 mm, ss304 inclusive robust tube within tube technology  
30° sealing plate in ss304 other angles as well as ss316 version on request  
Sound pressure level 75 dB(A)  
Installation up to 8 m below substrate level, other immersion depths on request  
Oil inspection glass for monitoring the tightness  
Agitator completely manufactured in modular design  
POM protection to minimize abrasion

#### Motor

Motor power: 15.0 kW, 2-poles  
High power factor, IE4  
400 V, 50 Hz, 2,965 rpm, special tensions on request  
PTC thermistors as overheat protection  
Ex-Motor  II 3G Ex nA IIA T3 Gc (ex-zone 2)

#### Gear

Robust 2-staged planetary gear, 1st stage helical geared, low noise level  
Reduction ratio  $i = 21.99$   
Longlife gear oil  
Oil change after 12,000 operating hours

#### Bearing

2 tapered roller bearings to absorb the axial forces  
Mechanical seal SiC/SiC, independent of rotation direction  
Interim slide bearings for the drive shaft


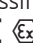
#### Propeller

3-blade high efficiency propeller, dynamically balanced  
FTX | 15.0 kW | propeller XT 1200-13 | 135 rpm  
ss304, optional ss316

#### Adjustment range

Sealing plate 1,430 x 1,430 mm optional right or left 30° preset, other ranges on request  
Vertical inclination through hydraulic cylinder + 5° / - 30°  
Tank opening (WxH): 1.1 x 1.1 m

#### Ex-zone

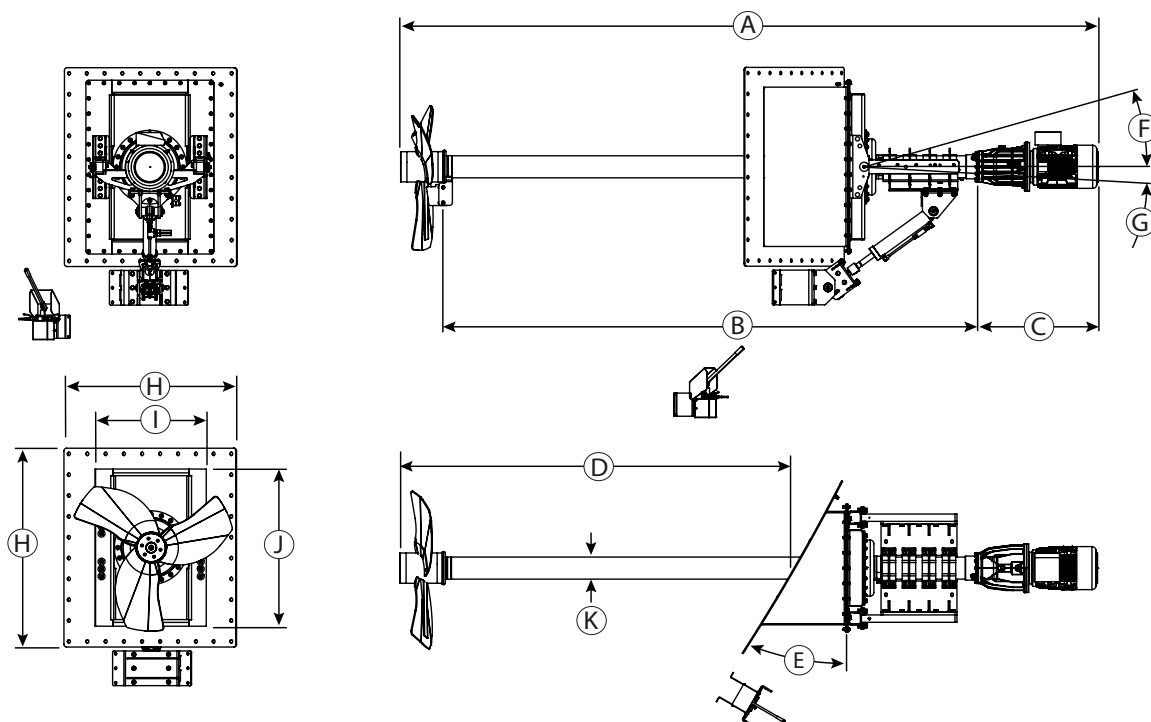
Ex-Zone 2 (outside tank) and Zone 1 (inside tank)  
Classification mechanical components:  
  II 2G Ex h IIA T3 Gb

#### Control box

Start/Stop operation via soft start provided by the customer  
Optional: frequency converter for speed control and increasing energy efficiency

## GIANTMIX FTX

### FTX 150-135



#### Dimensions

Type	A [mm]	B [mm]	C [mm]	D [mm]	E	F	G	H [mm]	I [mm]	J [mm]	K [mm]	
FTX 150-135	5,020	4.000		2,820								
	-	-	860	-	30°	30°	5°	1,430	900	1,100	Ø 159	
	7,020	6.000		4,820								

#### Technical data

Type	Rated power [kW]	Rated Voltage [V]	Rated current [A]	Frequency [Hz]	Power factor cos φ	Gear reduction ratio	Propeller speed [rpm]	Propeller diameter [mm]	Axial force [kN]	Flow velocity [m/s] *	Pumping rate Water [m³/min]	Weight approximate [kg]
FTX 150-135	15.0	400	27.1	50	0.85	22	135	1,200	6.5	3.4	223	1,100

Subject to technical changes

\* measured in water and 1.2 m distance

As per: 2023-11

© SUMA Rührtechnik GmbH | Martinszeller Str. 21 | DE-87477 Sulzberg  
Phone: +49 8376 / 92131 - 0 | Fax: - 19 | info@suma.de | www.suma.de/en