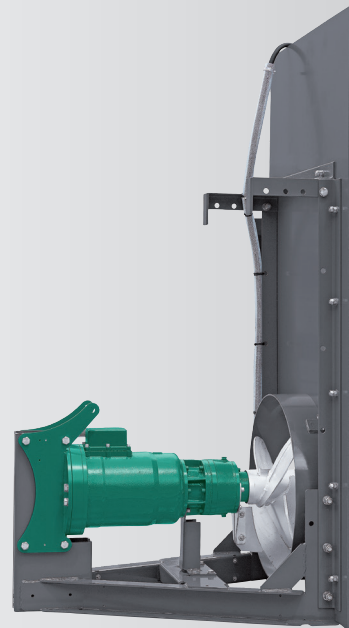
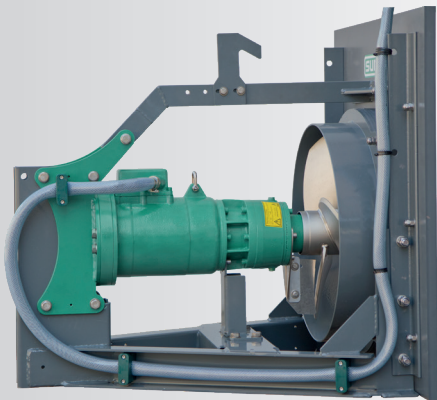
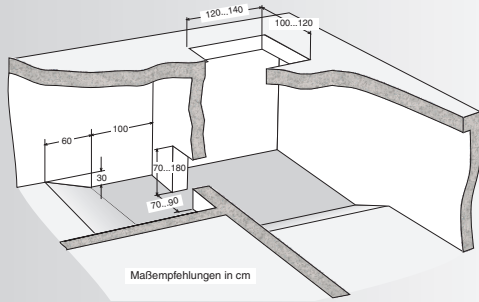


OPTIMIX STATIONARY



Application

Submersible motor for ring and slalom channels up to 2 m depth

Plate

Mounting directly onto the concrete funnel
 Funnel width opt. 700 mm
 Optional guide rail in ss304 at the wall window or on-site at the wall channel with guide groove
 PVC-Plate 30 mm thick and 1000 / 2000 mm high special dimensions on request
 Agitator frame galvanized and coated

Submersible motors

Power: 9 / 13.5 / 15 kW
 400 V, 50 Hz, 1,430 U/min
 PTC thermistors PTC 160°C as overheat protection
Accessory: POM protection to minimize abrasion

Propeller

Optimix 2G	9.0 kW	propeller HD+ 580	380 rpm
Optimix 2G	15. kW	propeller HD+ 620	380 rpm

Propeller galvanized, optional hardened steel or ss304

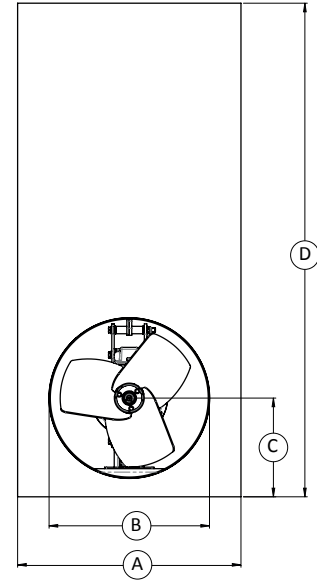
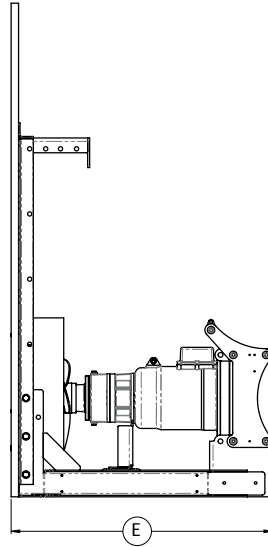
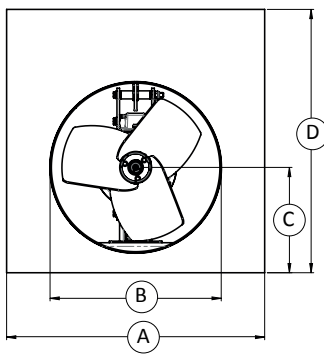
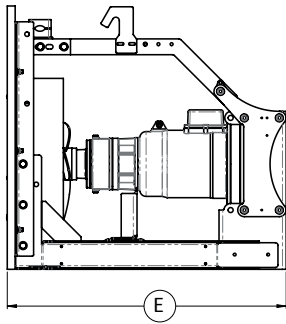
Optional ss304-version

Optimix 2A 135 - 380 completely manufactured in ss304 (13,5 kW)
 Propeller HD+ 620 in ss304
 Agitator guidig frame in ss304

Cable

Compressed cable guidance, 10 m cable as standard
 Cable 7 x 4 + 4 x 1,5 mm², Ø 20 mm, microbe resistant

OPTIMIX STATIONARY



Dimensions

Type	A [mm]	B [mm]	C [mm]	D [mm]	E [mm]				
Optimix adjustable short	980	610 / 640	400	1.0	1,060				
Optimix adjustable long	980	610 / 640	400	2.0	1,060				
Optimix 2A 135-380	980	640	400	1.0 / 2.0	1,130				

Technical data

Type	Rated power [kW]	Rated Voltage [V]	Rated current [A]	Frequency [Hz]	Gear reduction ratio	Propeller speed [rpm]	Propeller diameter [mm]	Axial force [kN]	Flow velocity [m/s]*	Pumping rate water [m ³ /min]	Weight approximate [kg]
Optimix 2G 90-380	9	400	18.0	50	3.83	380	580	2.0	3.4	52	180
Optimix 2A 135-380	13.5	400	24.0	50	3.83	380	620	2.6	3.7	62	190
Optimix 2G 150-380	15	400	29.0	50	3.83	380	620	2.6	3.7	62	190

Subject to technical changes

* measured in water and 1.2 m distance